

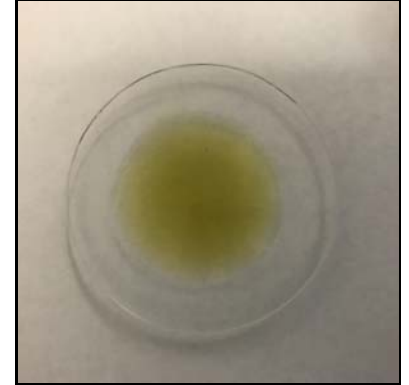
## Certificate of Analysis

<b>Client Name:</b> Munnin Organics	<b>Matrix:</b> Oil
<b>Client Address:</b> 575 Ninth Street SE, Suite 95, Minneapolis, MN 55414	<b>Date Received:</b> 6/15/2021 2:55:00PM
<b>Sample ID:</b> Pain Melt	<b>Lab Sample ID:</b> 2102673-01
<b>Lot/Batch #:</b>	<b>Date of Report:</b> 7/6/2021 3:39:27PM

Analysis	Requested (Yes/No)
Cannabinoid Profile	Yes
Terpene Profile	No
Aflatoxins	No
Heavy Metals	No
Residual Solvents	No
Microbial Testing	No
Pesticides	No



Sample, packaged



Sample, actual

### Cannabinoid Profile 2102673-01

### Pain Melt

Analyte	Result	RL	Units	Analysis Method	Date Analyzed	Notes
Cannabichromene (CBC)	0.0493	0.00153	% by Weight w	HPLC	6/22/21 10:39 pm	
Cannabidiol (CBD)	0.327	0.0153	% by Weight w	HPLC	6/22/21 10:46 pm	
Cannabidiolic Acid (CBDA)	0.00225	0.00153	% by Weight w	HPLC	6/22/21 10:39 pm	
Cannabigerol (CBG)	0.00699	0.00153	% by Weight w	HPLC	6/22/21 10:39 pm	
Cannabigerolic Acid (CBGA)	0.00351	0.00153	% by Weight w	HPLC	6/22/21 10:39 pm	V9
Cannabinol (CBN)	0.00402	0.00153	% by Weight w	HPLC	6/22/21 10:39 pm	
Delta-8-Tetrahydrocannabinol (d8-THC)	<0.00763	0.00763	% by Weight w	HPLC	6/22/21 10:39 pm	V3
Delta-9-Tetrahydrocannabinol (d9-THC)	0.00655	0.00153	% by Weight w	HPLC	6/22/21 10:39 pm	
THCA-A	<0.00153	0.00153	% by Weight w	HPLC	6/22/21 10:39 pm	
Total CBG	0.0101	0.00287	% by Weight w	HPLC	6/22/21 10:39 pm	
Total CBD	0.329	0.0166	% by Weight w	HPLC	6/22/21 10:46 pm	
Total THC	0.00655	0.00286	% by Weight w	HPLC	6/22/21 10:39 pm	



Sarah Smestad - Chemist II/Client Manager I

The results in this report apply to the samples analyzed in accordance with the chain of custody document. This analytical report must be reproduced in its entirety. All samples will be retained by Legend Technical Services, Inc. unless consumed in the analysis, for 30 days from the date of this report and then discarded unless other arrangements are made. ISO/IEC 17025:2017 Accredited, A2LA Certificate 2950.01.

## Certificate of Analysis

### Notes and Definitions

CFU/g	Colony Forming Units per Gram
HPLC	High-Performance Liquid Chromatography
MS	Mass Spectrometry
<	Less than value listed
RL	Reporting Limit
NA	Not Applicable
V3	CCV recovery was above method acceptance limits. This target analyte was detected in the sample, but the sample was not reanalyzed.
V9	CCV recovery was below method acceptance limits.